

Sable Points Beacon



**The 4th of July
At Little Sable Point & Big Sable Point**

The Director's Report

Many changes and exciting activities have marked the 2007 season at the three lighthouses operated by SPLKA. Our noteworthy achievements include:

- ?? Our keepers hosted 719 school students at Big Sable and 312 students at Little Sable, plus all of their teachers, aides, and parent chaperones. Finding funding for transportation to Big Sable is a priority for the near future
- ?? At Little Sable, visitor attendance has increased slightly from last year despite a 10% decreased camper count at Silver Lake State Park. A total of 4,369 visitors toured LSP May 1st through June 30th during the five days per week LSP is open.
- ?? At Big Sable, we had 4,949 people climb the tower in May and June (open 7 days/week) and countless additional visitors who shopped the gift shop and watched the video.

Continued on page 5...

Special points of interest:

- ?? Director's Report
- ?? 140th Anniversary
- ?? Lighthouse Transfer
- ?? Keeper Kwotes
- ?? Nature Notes
- ?? Keeper Application Info
- ?? Membership Info
- ?? Rescue Circa 2007
- ?? New Keeper Quarters
- ?? Board of Directors

140th Anniversary

The 140th Anniversary of Big Sable Point Light Station will be celebrated on October 27 with a day of exciting activities for the entire family. Make a point to join us if you can!

October 27th Activities at Big Sable:

10:00 a.m. – 7:00 p.m.

- ?? Gift Shop Open
- ?? Tower Tours
- 2:00-6:00 p.m.**
- ?? Kids' Corner
- ?? History of the Great Lakes Presentations
- ?? History of Great Lakes Lighthouses Presentations

- ?? Big Sable Point Slide Show
- ?? Dunes Ecology Walk
- ?? Photography Class
- ?? Foghorn Demonstration

6:00 p.m.
Light Supper Served

- 7:00 p.m.**
- ?? Lighting Ceremony
- ?? Lighthouse Ghost Tour

Bus transportation will be provided to the lighthouse, and donation boxes will be available to offset the cost of the celebration.



Please R.S.V.P.

by phone

(231-845-7343)

or e-mail

(bsplka@t-one.net).

Keeper Kwotes:

May 5th - "...Joining us for Ceil's great lasagna dinner was Bob Sperling, Marnie (one of the 3 sisters who donated the bench out front in memory of their mom) and her family..."

May 14th—"I found out that there are over 1800 items available in the Gift Shop! And the storage rooms are wonderfully organized!"

May 15th—"Susan did not have a good night sleep. She was sitting in the kitchen at 3:30 a.m., and swore she heard someone walking in the Gift Shop. Henry must have gotten out again..."

May 16th—"Two school groups were on the schedule today. The first group arrived before 10 a.m. They had walked up the beach with 20 mph gusts in their faces... Paul, from the State Park, became part of staff for the morning, and he would take part of the group to talk about the dunes... We all had our "stations"- Connie, Judy and Audrey in the shop, Bob in the video room, and Steven, Sue and Gini in the Tower."

May 20th—"Craig invited us to see Little Sable Point Lighthouse and the new accommodations for the keepers— comfortable house in the woods about 2 miles from the tower. It will work out quite nicely—3 bedrooms, living room, kitchen, one bathroom, full basement, dining room, and 2-car garage. What more could you need!! Even new appliances."

June 3rd—"No deer tracks on the beach today. Eagles were on the beach at 7:00 and also in the afternoon..."

June 7th—"All lights had to be turned on in the house for photographic purposes by professional photographers Todd and Brad Reed...Gorgeous sunset tonight. We invited Todd and Brad in when they were through with their photo shoot to have coffee and blueberry dessert. We all talked and shared stories and heard about the Reeds' upcoming book to be published hopefully in December..."

July 13th—"It is most affecting to me that this narrow but tall building we are celebrating was built the year after the Civil War ended & is maintained so close to that period. A link back in our history that is tangible, solid, real. The organizational skill and effectiveness of the lighthouse keepers association to 'pull this off' with largely volunteer staffing is amazing."

July 14th—"The afternoon featured a lady who listened intently to my answer to a question about whether the lighthouse is haunted. After I related a couple of stories—one first-hand, the other second- (third-?) hand—and everyone else had filed up the hallway to the tower, she told me that just moments before she had been composing a photo of the lighthouse when she clearly heard someone whisper her name in her ear. Assuming it was her daughter, she turned around and saw nobody at all nearby. Henry apparently was walking the grounds..."

**Remaining Bus Days for 2007
August 18th & September 15th**

Ludington North Breakwater Light Transfer Ceremony



On June 2nd, 2007, responsibility for the LNBL was officially transferred to the City of Ludington and the Sable Points Lighthouse Keepers Association. Attending were (L to R): Coast Guard Chief Beatty, Senator Gerald VanWoerkem, GSA Representative Joe O'Bradovic, Councilman Paul Peterson, Mayor John Henderson, Congressman Pete Hoekstra, Dr. William Anderson, Craig Renny, Representative Palsrok's Aide Jordan Hankwitz.

Nature Notes:

Plovers: Two pairs of plovers fledged this year to the north of the lighthouse at BSP. The plovers actually made their nests behind the foredune in the gravel pans this year. They have built their nests right on the beach in prior years; according to the bird books the plovers are now building their nests in the proper habitat.

Porcupine & Deer: A porcupine has been seen around BSP at night, and the deer are almost always about in the evening.

Swifts: A family of swifts has built a nest at the northeast corner of the house, and one of the young has been entertaining people in both kitchens by sitting on the window sill for extended periods of time.

The Lake: The lake level remains low, but as history has shown, that will not always be.

Poison Ivy: Poison ivy in the area of LSP remains an issue for tourists who stray from the sand paths.

Projects currently being implemented or in the works include:

- ?? Brochure for LSP—photos and text have been acquired
- ?? 140th Anniversary celebration—details provided in another article
- ?? Interpretive displays for LNBL
- ?? Pathways to Illumination for LSP- MC Smith A/E currently developing a plan
- ?? The 1941 fog signal building— hopefully this autumn

Save the Date

The 2008 Annual Meeting on May 17th will once again take place aboard the S.S. Badger— more details to come later.

Keeper Applications

Keeper applications for the 2008 season at all three lighthouses are now available. Extended hours at Little Sable and the opening of the Ludington North Breakwater have greatly expanded Keeper opportunities. Hundreds of people have experienced the thrill of working at our lights with kindred spirits who share their passion for lighthouses. Join the fun of supporting these magnificent structures by promoting the educational, historical, and ecological importance of the three Ludington-area light stations. Email us at bsplka@t-one.net or call (231) 845-7343 to request an application. Membership support is essential to the mission of our organization, and serving as a Keeper provides an unforgettable experience for Keepers and visitors alike.

Please use this form for your 2008 membership. We ask that you do so to minimize additional mailing costs. Your membership expiration date appears on the address label on this newsletter.

Membership Application

Name _____

Address _____

City, State, Zip _____

Telephone (____) _____

E-Mail Address _____

? New ? Renewal ? Donation

- ? Second Assistant Keeper \$25
- ? First Assistant Keeper \$50
- ? Head Keeper \$100
- ? District Inspector \$250
- ? Lifetime Membership \$500

Amount Enclosed: _____

Please write check payable to:
SPLKA

Please mail check and completed form to:
Sable Points Lighthouse Keepers Association
P.O. Box 673
Ludington, Michigan 49431
(231) 845-7343

2007 Volunteer Keepers
Big Sable, Little Sable, and Ludington North Breakwater

David and Joanne Allan – BSP, LNBL	Susan Higginbotham - BSP	Ron/Karen Nelson Pryor – LSP
Bob and Becki Baltzer – BSP	Mary Hollander – BSP	Julie Quinn - LSP, LNBL
Marlene Basinger – BSP, LNBL	Ted Hosner - LSP	Gini Raby – BSP
Bob and Dee Bentley - LNBL	Linda Hummel – BSP, LNBL	Connie Reece - LNBL
Ed and Delores Bauer - LSP	Anne Jameson – BSP	Todd and Brad Reed—SPLKA
Heinz and Judy Bertram – BSP, LNBL	Charles Jameson - BSP	Ken and Judy Reeves – BSP, LSP
Vee Bjornson – BSP, LNBL	Marnie Johnson - LNBL	Renny Boys—LSP
Mary Lou Bogema – BSP, LNBL	Stephen Kantner - LSP	David and Carol Rodwell – LSP
Randy and Janis Brady – BSP, LNBL	Dorene Kenworthy – BSP, LNBL	Pam Ruiter – LNBL, LSP
Jack and Elaine Buege – BSP, LNBL	Yvonne Kessler – all	Sandy Schmitt – BSP
Doug and Carol Buikema – LSP	David and Gloria Kett – BSP	Anita Scofield - LSP
Rita Byrd – LSP	John and Julie King - LSP	Lyle and Janice Severson – BSP, LSP
Jim Clark - LNBL	Audrey Kodger – BSP	Kerri Snyder - LSP, LNBL
Al and Nancy Cocconi – BSP, LSP	Jackie Koeberlein - LSP	Beth Spears - BSP
Bill Conant - LSP	Ed and Nancy Kopman – BSP	Will and Dorothy Spence – BSP
Georjean Cory – BSP, LNBL	Jack and Ruth Kroeze – LNBL, LSP	Ike Stephenson—LSP
Bob and Mary Dawson - LSP	Donna Lamore - LSP	Allan Thiele – BSP, LNBL
Jan Dennis – BSP	Gene/Marian Larson—all	Jack/Gerry Thornton – BSP, LNBL
Carl and Clair Dennison – BSP, LSP	Dale and Jan Lathers – LSP	John/Jan Topping – BSP, LNBL
Luke Dillon – LSP	Reeves and Lisa Logan - LSP	Rich and Carol Tompkins— LSP
Scot Epling - LSP	Bill and Carole Loll – BSP, LNBL	Ron and Maedean Tower - LSP
Katie Essex – BSP	Carl and Mary Luther – BSP	Harold/Phyllis Triezenberg – BSP
Helen Foster—LSP	Bruce and Marcia Martin - LSP	Steve and Grace Truman – LSP
John and Barb Fuelberth – BSP, LNBL	Hank and Shirley Masters – BSP	Bob/Gayle Turnwald – BSP, LNBL
Ralph and Janet Gels – BSP, LSP	David McCullough—LNBL	Chris VanAntwerp - LSP
Nancy Gerts – BSP	Earl and Sue McCullough – BSP	Steven/Susan VanDenBerg-BSP
Diana Goodrich – BSP	Bob and Judy McQuilkin – BSP	Linda VanLaan - LNBL
Jack and Toby Graham – LNBL, LSP	James Mulder—SPLKA	Bruce/Sandy VanWingen-BSP, LSP
Curtis and Betty Grundahl – BSP, LSP	Wayne and Leabell Miller - LNBL	Bob and Sharon Vensas – BSP, LSP
Doug and Pat Guikema – BSP	Bill and Shirley Mitchell – BSP, LSP	Bill and Deanna Vernagus – BSP
Christy Hallenbeck—BSP	Connie Myers – BSP	Gary and Sally Veurink – LSP
Mark and Nancy Hallenbeck – BSP	Patty Nelson – BSP, LSP	Marcella Wade - LSP
Dave Hamman - LNBL	Jeanne Newman - LSP	Tom/Connie Walsh – BSP, LNBL
David Hansbarger/Ruth Redd – BSP	Andy and Bonnie Ozanich – BSP	Don and Marilyn Walsworth – LSP
John and Jane Hansmann – BSP, LSP	Dale and Kathy Painter – BSP	Marcia Walsworth – LSP
Pauline Haveman – BSP	Matt Painter and Crew—BSP	Sybil Weaver – BSP
Dave Hawley - LNBL	Dave and Debbie Parker – BSP	Carl and Mort Wiegand – all
Joan Heinen – BSP	Roger/Glenna Pashby – BSP, LSP	CJ/Marlene Willemse – BSP, LNBL
Leigh Heise - BSP	Patric and Pat Patterson – BSP, LSP	Duane and Marilyn Witter – BSP
Ceil Heller – BSP, LNBL	Larry and Corrine Phillips – BSP	Gordon and Carolyn Worth - LNBL
Phil Helmer – LNBL	Tom and Helen Pische - LSP	John Young - LSP
Randy and Barb Hemstad – BSP, LNBL	John and Jo Preheim – BSP, LNBL	
	Ed Pruden – BSP, LSP	

A Special “*THANK-YOU*” to all of our volunteers who served as keepers and preservation workers

140th Anniversary Rescue

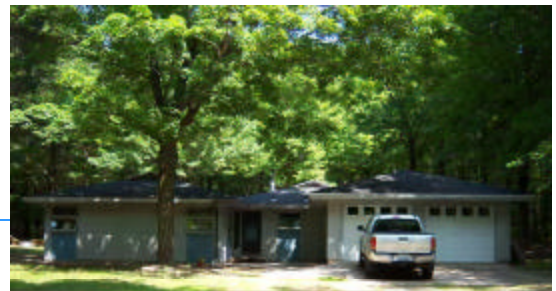
The keepers at Big Sable Point Lighthouse continue to assist shipwrecked mariners even after 140 years. Early on the morning of Sunday, July 15th, a father and 3 sons, along with a family friend, discovered that their 18-foot boat was taking on water. They turned on the bilge pump and headed toward the lighthouse. The pump could not keep up with the leak, and soon the waves began to come over the transom. The father and boys were able to beach the boat



before being offered comfort by volunteer keeper David Parker, who witnessed the boat swamping, and the other keepers. The crew was offered showers, their wet clothing was cleaned, and everyone received a new Big Sable T shirt!

Quarters for Keepers!

The addition of two new lighthouses has presented new challenges for attracting and housing volunteer lighthouse keepers. Since neither of the new lights has living quarters, the Association was successful in securing alternative housing options. At Little Sable, the State Park turned over a used employee residence, and a re-roofing job and minor interior improvements have transformed the single story, 3-bedroom home (in a lovely wooded setting 2 miles from the lighthouse) into a comfortable abode for 4 volunteer keepers. At the North Breakwater Light, the Association obtained the use of a cozy cottage that houses 2 keepers and is located exactly one mile from the door of the LNBL tower. Both facilities won rave reviews from the keepers who inaugurated the new keepers' quarters.



Talents Needed

- Writing
- Administrative/office skills
- Financial
- Maintenance/building
- Model making
- Mechanical drawing/CAD
- Artistic

Please contact SPLKA if you can offer any of these services.

Thank you!

P.O Box 673, Ludington, MI 49431 or 231-845-7343 or bsplka@t-one.net

The Director's Report, Continued from Page 1

- ?? At Ludington North Breakwater Light 1,481 visitors climbed the tower in the 13 days in June since the light was dedicated and opened to the public.
- ?? The Association will employ 200 volunteer keepers during this season.

The organization continues to grow through meetings and teleconferences with other lighthouse groups, organizations, and potential funding sources. The Association plans to increase our endowment fund to continue the momentum that has been building during the past year. Our future indeed looks bright and we thank each of you for your continued interest and support!



Sable Points Lighthouse Keepers Association

P.O. Box 673

Ludington, MI 49431

**Invitation to the 140th Anniversary
Celebration on Page 1**

**2007 Board of Directors
Sable Points Lighthouse Keepers Association**

**President, Jack Buege
Vice President, Jack Thornton
Secretary, Carol Rodwell
Treasurer, Shirley Mitchell
Ed Dennison
Katie Essex
Bruce Nelson**

**Grace Truman
Mort Wiegand
Ceil Heller (2008)
Executive Director, Craig Renny
Asst. Executive Director, Kathy Painter
Samantha Dains, Gift Shop Specialist
Restoration/Maintenance, Bob Sperling**

**We are committed to the protection, restoration, preservation and interpretation of
lighthouses and their role in Michigan maritime history.**